

GB Instruction for use



UMPRSJ20200526GB

POWERTEX Rigging Screw model PRSJ Welded



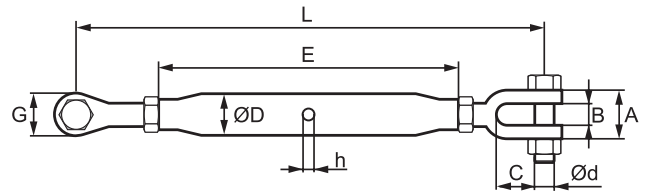
# POWERTEX Closed Body Rigging Screw

## Instruction for use (GB) (Original instructions)



**WARNING**

- Failure to follow the regulations of this mounting instruction may cause serious consequences such as risk of injury.
- Read and understand these instructions before use.



Thread	WLL tons	A	B	C	D	E	G	d	h	L		Weight kg
										min	max	
M10	0,5	20	10	16	17,2	150	18	M8	7	225	335	0,3
M12	0,7	25	13	25	21,3	195	24	M10	8	315	470	0,65
M16	1,2	34	18	38	27	230	31	M12	8	380	565	1,25
M20	1,5	36	20	42	34	270	39	M16	12	450	660	2,2

**General:** For tightening of ropes, cables and the like. With locking nuts. Split pin stainless AISI 304.

All rigging screws are individual tested and numbered.

**Stamping:** POWERTEX, WLL xxT, batch number.

**Pinbolt:** Hot dip galvanized + Blue painted RAL5017.

**Nut on bolt:** Hot dip galvanized + Red painted RAL 3018.

**Quality/Grade:** 4.6

**Finish:** Hot dip galvanized (M6 and M8 electro galvanized).

**Safety factor:** 4:1.

1. EC Declaration of conformance is required and report of thorough examination.
2. Before use each rigging screw should be inspected to ensure that:
  - all markings in the product are readable and in compliance with the relevant documentation.
  - The components are assembled in correct way.
  - Body and end terminals shall not be distorted or unduly worn.
  - Body and terminals are free from nicks, cracks, grooves and corrosion.
 If there is any doubt with regards to the above criteria being met, the rigging screw should not be used.
3. It is important to ensure that the terminals are safely locked, before putting load on it.

All threads in the ends of the body must be fully engaged with the terminal threads, and safety locked with the stop nuts.

4. Turnbuckles should be fitted to the load in a manner that allows the turnbuckle to take the load in a true line along its centerline to avoid bending stresses which will reduce the load capacity of the turnbuckle. To avoid eccentric loading of the terminal it is recommended to distribute the load as much as possible over the total length of the pin or to use loose spacers.

5. Temperature range: -20°C - +200°C.

6. Never modify the fittings eg. to reduce the inside width of a terminal by pressing on the side eyes or welding washers / spacers to the inside of the eyes. Such action makes the declaration of conformance invalid.

7. **For lifting!** Do not adjust the length under load.

**End of use/Disposal**

Powertex turnbuckles shall always be sorted / scrapped as general steel scrap.

Main material is C15, and hot dip galvanized. Split is AISI 304. Certex will assist you with the disposal, if required.

**Must be inspected at least once a month and must undergo a complete overhaul at least every 12 months. Please note local rules and regulations must be complied with regards to inspection.**

**Disclaimer**

We reserve the right to modify product design, materials, specifications or instructions without prior notice and without obligation to others.

If the product is modified in any way, or if it is combined with a non-compatible product/component, we take no responsibility for the consequences in regard to the safety of the product.

Declaration of conformity  
 SCM Citra OY  
 Juvan Teollisuuskatu 25 C  
 FI-02920 Espoo  
 Finland  
 www.powertex-products.com

hereby declares that Powertex product as described above is in compliance with EC Machinery Directive 2006/42/EC and amendments.

## CertMax+

The CertMax+ system is a unique leading edge certification management system which is ideal for managing a single asset or large equipment portfolio across multiple sites. Designed by the Lifting Solutions Group, to deliver optimum asset integrity, quality assurance and traceability, the system also improves safety and risk management levels.

---



## User Manuals

You can always find the valid and updated User Manuals on the web. The manual is updated continuously and valid only in the latest version.

**NB!** The English version is the Original instruction.

The manual is available as a download under the following link:  
[www.powertex-products.com/manuals](http://www.powertex-products.com/manuals)





**POWERTEX**



The Lifting KnowHow



[www.powertex-products.com](http://www.powertex-products.com)