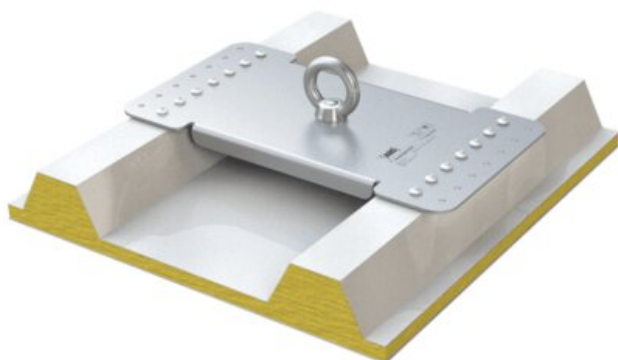


Anchor Point ABS - Lock X-Rivet

Product information



Anchorage point - designed for riveting onto sandwich and trapezoidal sheeting.
Anchor point ABS-Lock X-Rivet is simply riveted on top of roof membrane using 14 watertight blind rivets.

The 2 different base plates can be used for different seam intervals.

- LX-SW-N-250 -> Distance between the holes: 180-250 mm
- LX-SW-N-333 -> Distance between the holes: 280-333 mm

Also available as an intermediate ("ZW") bracket in a lifeline system in 2 heights.

- LX-SW-N-...-ZW -> Bracket height 150 mm
- LX-SW-N-...-ZW-350 -> Bracket height 350 mm

For steel plating: ≥ 0.45 mm;
Aluminium: ≥ 0.8 mm.

Force directions: Lateral.

Substructure: Sandwich, trapezoidal sheeting, profile roof.

Attachment: Riveted

Application: Profile Roof, flat roofs

Material: Stainless steel

Marking: According to standard

Standard: EN 795, CEN/TS/16415

Note: Installation materials included

Part Code	Code	Max. number of persons	Weight kg	Delivery time
8415SY103135	19.10SY-1031-35	-	0.17	20
8415LXSWN250	19.10LX-SW-N-250	3	2.012	20
8415LXSWN333	19.10LX-SW-N-333	3	2.129	20
8415LXSWN250ZW	19.10LX-SW-N-250-ZW	3	2.34	20
8415LXSWN333ZW	19.10LX-SW-N-333-ZW	3	2.457	20
8415LXSWN250ZW350	19.10LX-SW-N-250-ZW-350	3	2.712	20
8415LXSWN333ZW350	19.10LX-SW-N-333-ZW-350	3	2.829	20